



# PacWaste

PACIFIC HAZARDOUS WASTE MANAGEMENT

**PacWaste**  
PACIFIC HAZARDOUS WASTE MANAGEMENT



**SPREP  
PROE**



EUROPEAN UNION

A four year project (2014-2017) funded by the European Union and implemented by the Secretariat of the Pacific Regional Environment Programme (SPREP) to improve regional hazardous waste management across the Pacific.

## PacWaste focus areas

- Healthcare waste
- Asbestos
- E-waste
- Atoll waste management
- Regional collaboration

**DES CHOIX  
ÉCLAIRÉS  
POUR UN  
PACIFIQUE  
PLUS SÛR  
ET PLUS  
PROPRE** 

Pour d'autres idées,  
rendez-vous sur

[www.sprep.org/pacwaste](http://www.sprep.org/pacwaste)

## Healthcare waste

- 14 Pacific island countries plus Timor-Leste
- Baseline surveys at 42 hospitals and health clinics across 15 countries
- Tailored healthcare waste management training





## Healthcare waste

- Provision of 26 incinerators in 12 countries
- Provision of PPE, signage and secure storage systems
- National healthcare waste management strategies



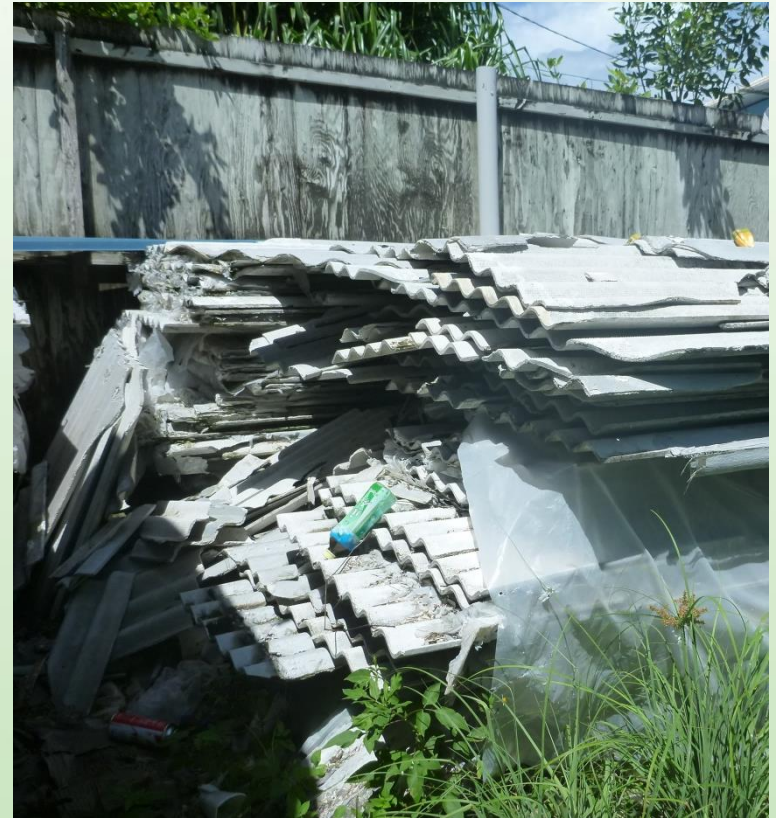
# Asbestos

- 13 participating Pacific island countries
- Regional baseline survey
- USD 2 million for secure asbestos removal at 73 prioritised locations



# Asbestos

- Asbestos management training
- Regional asbestos awareness campaign
- Facilitating the development of national asbestos strategies





## E-waste

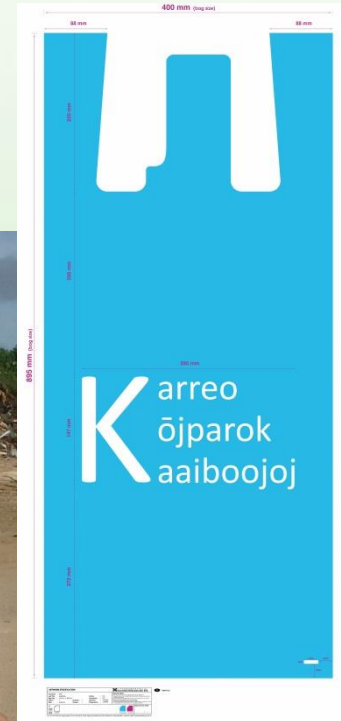
- Nine participating countries
- Baseline survey
- Pilot projects in six countries
- Recycling networks
- National public awareness campaigns





# Atoll waste management

- Majuro atoll, RMI
- Based on 4R and user-pays principles
- Pre-paid bag implementation
- Green waste separation



# Atoll waste management

- Revolving battery buyback fund
- Advanced recycling fee legislation
- Bulk metal recycling assistance



## Regional collaboration and ‘twinning’

- SPREP/PacWaste/INTEGRE partnership
- Expertise accessed through regional forums (recyclers networks, Cleaner Pacific Roundtable, PacWaste SC)
- Twinning visits conducted on atoll integrated systems - Majuro (PacWaste), Tarawa (MFAT), Tuvalu (EU)
- Partnerships on landfilling Labasa (JICA/JPRISM)



## OCTs and SPREP/PacWaste

- OCTs can provide expertise to assist with sustainable 'island' waste management across the region.
- We can work together to pool regional resources on island specific waste problems
- Create pathways to engage the private sector to assist in regional waste management



# Thank you!



**AMENEZ  
VOTRE  
SAC**

**DES CHOIX ÉCLAIRÉS  
POUR UN PACIFIQUE  
PLUS SÛR ET PLUS PROPRE**

[www.sprep.org/pacwaste](http://www.sprep.org/pacwaste)



**RECYCLEZ  
CE QUE  
VOUS POUVEZ**

**DES CHOIX ÉCLAIRÉS  
POUR UN PACIFIQUE  
PLUS SÛR ET PLUS PROPRE**

[www.sprep.org/pacwaste](http://www.sprep.org/pacwaste)



**NE LAISSEZ PAS  
LES ORDURES  
ATTEINDRE  
NOS OCÉANS**

**DES CHOIX ÉCLAIRÉS  
POUR UN PACIFIQUE  
PLUS SÛR ET PLUS PROPRE**

[www.sprep.org/pacwaste](http://www.sprep.org/pacwaste)