



NTEGRE

Initiative des Territoires pour la Gestion Régionale de l'Environnement



CPS
Secrétariat général
de la Communauté
du Pacifique

Pitcairn Islands



Union Européenne



NTEGRE

Initiative des Territoires pour la Gestion Régionale de l'Environnement



CPS

Secrétariat général
de la Communauté
du Pacifique

Geographic presentation

4 near-pristine small islands - some of the most remote islands in the world:



Union Européenne



NTEGRE

Initiative des Territoires pour la Gestion Régionale de l'Environnement



CPS
Secrétariat général
de la Communauté
du Pacifique

Geographic presentation

4 near-pristine small islands - some of the most remote islands in the world:



Union Européenne

Geographic presentation

- Pitcairn:** *Peak of a dead volcano* - land area $\approx 5 \text{ km}^2$ - 347 m > sea lev.
Only inhabited island (pop. ≈ 60). Climate : sub-tropical - rich volcanic soil & lush vegetation. Transport is by quad bike, and the island is in a mainly unspoiled condition;
- Henderson:** *raised fossilized coral atoll* - UNESCO World Heritage Site;
- Ducie:** *the most southerly coral atoll in the world* - central lagoon surrounded by 4 islets - 70 ha;
- Oeno:** *low coral atoll* - 65 ha, low lying - shallow lagoon & fringing reef.

Socio-economics

Population:

- permanent resident population of 52 (March 2012),
- 50% M/F, 19% <20 yrs, 61% between 21&65, 20% > 60 yrs.
- labour force : 31. 10 non – res officials (generally 1 year-contracts).

Employment:

- Government sector (82 part time paid Government posts).
- Private sector: tourism, carving, honey, fishing, fruit & vegetable, general maintenance, bartering with cruise ships...

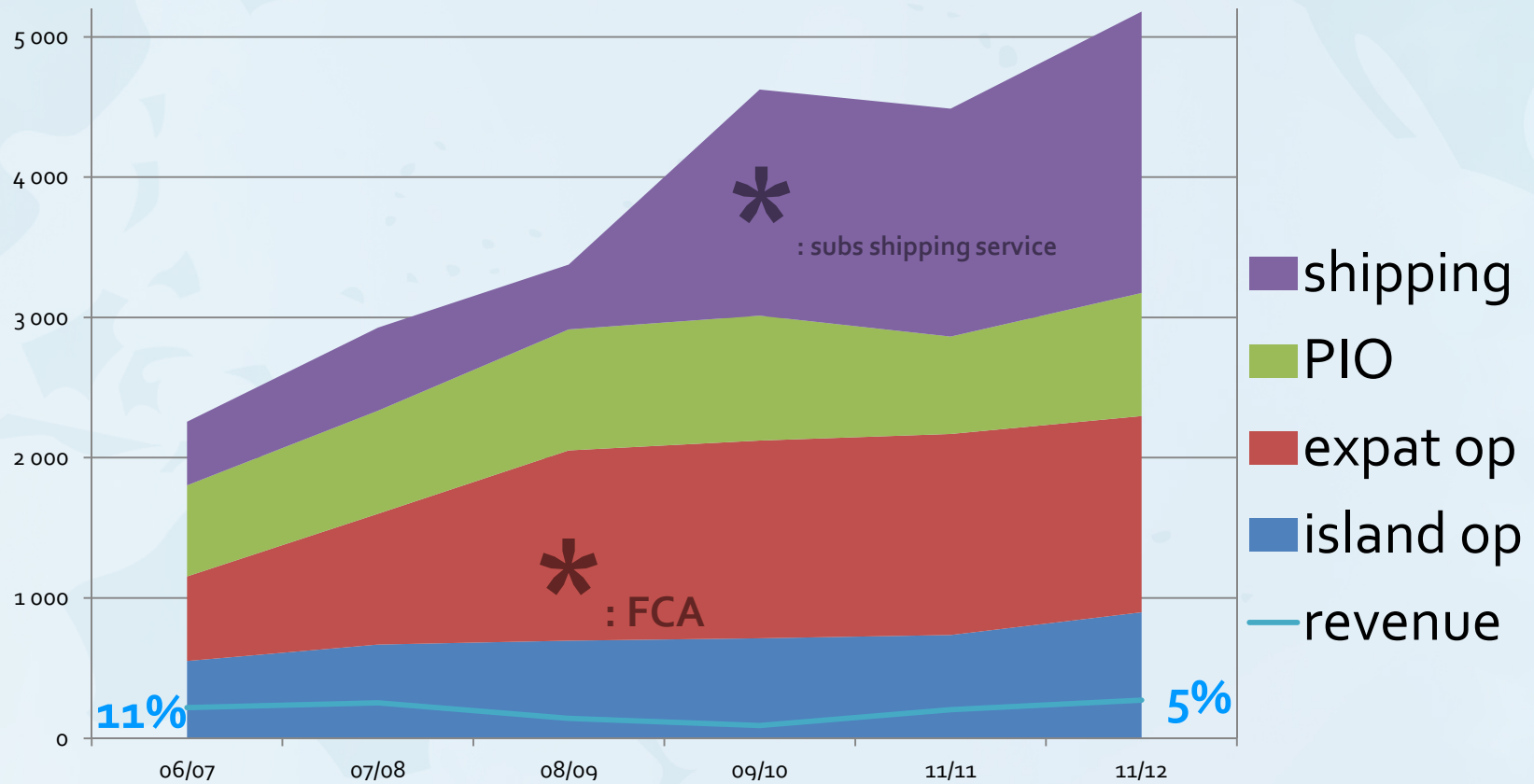
Economics:

- GDP: 217 000 NZ\$, 4 340 NZ\$/hbt

+ Business mentoring program: HMGfund / BMNZ – small businesses on Pitcairn

Socio-economics

Economics - Government sector : revenues & expenses



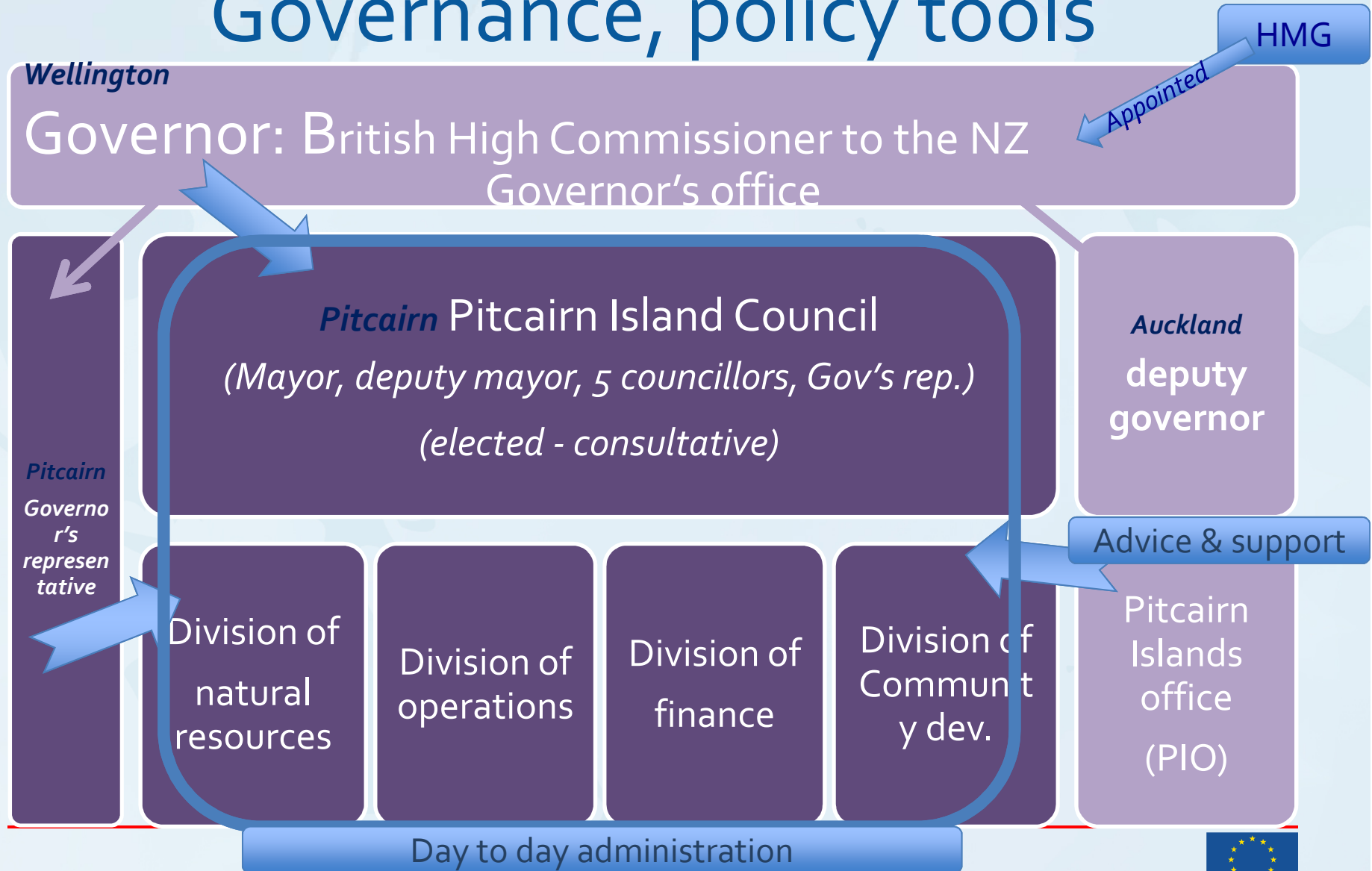
Stakes and risks

Ecology, social, economics

- ***Potentials:***
 - tourism, fisheries,
 - abundant supply of fruit and vegetables which grow easily in the rich soil
 - economic activities: honey production; carvings and sale of handicrafts; home stay tourism
 - own internal market + potential market for Mangareva (nearest neighbour)
- ***But / essentials to develop:***
 - ageing population
 - soil erosion,
 - waste management,
 - develop safe fisheries practice,
 - safe anchorage points for the yacht visitors



Governance, policy tools



Policy tools

- ***Strategic development plan***: 2012-2016
 - Immigration and re-population,
 - Infrastructure development
 - Tourism development

Integrated management: situation

Existing body: Pitcairn Island Council:

- *Main elected body – consultative*
- *Composition: Mayor, deputy Mayor, 5 councilors, Gov's rep.)*

SDP 2012-2016: *summary of the views and aspirations of the Pitcairn Islanders: 1st draft prepared by the community under the leadership of the Council + reviews by stakeholders*

Technical tools

What are the tools used in Pitcairn for management purposes (4 main types of tools are identified: Spatial analysis, Assessment of economic value of the ecosystems, Risks evaluation, Data management systems

Scheduled in SDP:

- Annual database
- Bi-annual socio-economic surveys

Stakes and risks - *Governance, policy tools*

What are the main risks that you identify? The potentials? Are there any problems of legitimacy, of actors / divisions / groups set aside? Can you feel any tensions and where?

Ideas (DL):

- High aid-dependency, relies on expatriate operations (doctor...)
- External decisions (*is there an evaluation of the consultancy effects?*)

Stakes and objectives

From 16 SDP components, objectives and targets:

Direct INTEGRE implication:

- 11. environment & conservation: conserve & protect the natural env of PI → rat eradication, soil erosion, waste management
- 13. agriculture & fisheries: promote realistic dev. → review of policies, annual performance reports, develop safe fisheries practice

Positive effects of / synergies with INTEGRE:

- 6. governance & organisation
- 7. employment: encourage human resources → skills & training
- 9. health: meet the needs → promote awareness, education campaigns
- 12. private sector: supports the community → exports to Mangareva
- 15. external relations: → SPC relations, FP&Mangareva



NTEGRE

Initiative des Territoires pour la Gestion Régionale de l'Environnement



CPS
Secrétariat général
de la Communauté
du Pacifique

En vue du jour n° 2: diapo « activités »

Cette diapositive ne sera pas nécessairement à présenter le jour 1, mais vous pouvez la préparer en vue de la discussion du jour 2



Union Européenne

Proposed activities

- **Waste Management** - create safety protocols, form a small committee, suitable waste management building, glass crusher, rubbish bins for households → healthier environment.
- **Soil Erosion** - Use latest technology improvements to find/finance products (Enka mats, concrete, culverts, ground covering plants...) → reduce & prevent soil erosion and further landslides.
- **Fisheries & Marine Management** – employ one permanent, one part-time + training, office equipment, form a small committee, building for packaging (export) → management plan, develop good practices, resources in good health and capacity to export.
- **Rat control** – rat bait from NZ → improve farming yields.
- **Training & sharing of best practice + general support for the division manager of NR** → the more knowledge we gain the better equipped we are to further development.

To be detailed